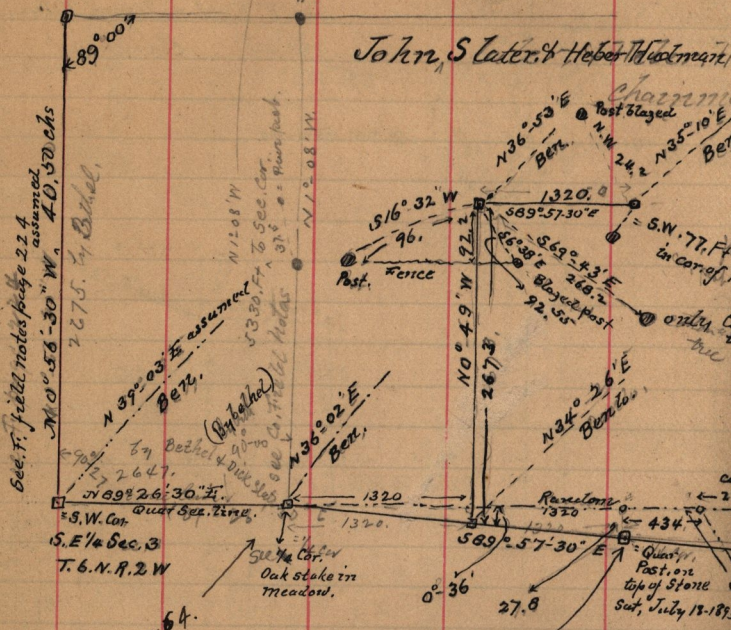


sect- 123

136

July 18-189.

John Slater & Hebert Huelmar



See F. field notes page 224 assumed

N 0° 56' 30\" W, 40.50 chs

277.5 by B. H. L.

N 39° 03' E assumption  
5330.74 to Sec. Cor.  
378 a. Rain post

S.W. Cor.  
S.E. 1/4 Sec. 3  
T. 6. N. R. 2. W

S. E. 1/4 Cor.  
Oak stake in  
Meadow.

S.E. Cor. N. Sec. 11 me  
John Slater  
H. Huelmar

See this book, page 64.  
I-140, 182

ties to

S. E. Cor. S. W. 1/4 Sec. 2, T. 6. N. R. 2. W

N 83° 45' W 478. Ft. to S. E. cor. John Slater's brick house.

size 16 ft N & S. by 30.2 Ft E & W,

N 16° 30' W. 26.95 Ft. to blazed cedar post in fence, N & S.

S. 9° 40' W 38.55 Ft. " " " " " "

N 32° 45' E. Bent's Plk.

the E. line of said 1/4 Sec. bears N 0° 49' W. approx to N. E. Co. of E this point above described, is marked by a stone 15" x 10" placed 10" beneath surface, with cedar post 3 ft long set 4 in & mound around, same, pits E. W. 5 ft distant.